



The next generation
Rubber Flooring Solution

Eco-friendly | **Economical** | **Endurable**

GymTile
Rubber Flooring

Inquiry: 3575 3818 sales@atsport.com.hk www.atsport.com.hk

What is GymTile?

GymTile 橡膠地墊由創力美橡膠地墊公司(以下簡稱創美)於1998創立。創美在專業橡膠地墊行業中擁有超過14年的經驗，為不同類型的場地如健身中心、公共和私人康樂會所提供最佳品質的橡膠地墊產品。

GymTile Rubber Flooring was developed by A&T Rubber Carpet Company in 1998. With more than 14 years of experience in providing professional rubber flooring solution, A&T can ensure a premium quality flooring product tailor made for almost any kind of application such as fitness centre, public and private recreation clubs.

GymTile 不單止是一種專門應用於康樂及體育場地的高品質、多用途橡膠地墊，亦是一項全面、客製化的地板鋪設解決方案。

GymTile is not only a high quality, multi-purpose rubber carpet specially for recreational and sports venue use, but also a solution that provides clients an all-round and customization flooring.

GymTile 的優勢分為3大點:

GymTile differentiates itself by 3 excellent advantages:

環保產品 Eco-friendly

GymTile 以循環再用的材料製造，乾淨、無毒，絕對是替代傳統地板的最佳之選。
GymTile is made of recycled and environmental friendly materials with clean and non-toxic advantages, which is a terrific alternative to traditional hard surfaces.

經濟效益 Economical

要求美觀和品質的同時並不代表需要高消費能力，GymTile 可根據公司或機構的設計和預算要求，提供各種顏色、風格和組裝選擇。
Trading up to style and quality shouldn't mean trading off affordability. GymTile provides a series of flooring options and color customization that fits your budget.

高質耐用 Endurable

地墊防滑、防潮濕但有彈性，非常耐用，為場地的地板延長壽命，合乎成本效益。
This permanent resiliency, damp proof and slip resistant product is designed to be durable yet cost-effective to extend the life of the flooring.

Why GymTile?

GymTile 是替代傳統地板的最佳選擇，可應用於不同場地。GymTile 的好處有：
GymTile provides you an excellent alternative option of hard surface which could be tailor made for almost any kind of venues. GymTile's benefits including:

質料方面 Materials Aspect

- | | | |
|--|---|--|
|  防靜電 Prevention of static electricity |  防潮濕 Damp proof |  防撞擊 Prevention of crashing |
|  隔音 Soundproof |  防細菌滋生 Prevention of bacteria growth |  防滑 Slip proof |
|  耐燃 Fire resistant |  環保 Environmental Friendly | |

管理方面 Management Aspect

- | | |
|----------------------------|---|
| 保護原裝地板
Protect flooring | 比傳統地毯更耐用
Higher durability than traditional carpet |
| 安全
Safety to users | 容易保養
Easy to maintain |
| 節省成本
Cost saving | 100% 客製化
100% Tailor-made |

GymTile 可應用的場地包括: 舉重室、健康舞室、會所、健身中心、儲物櫃房間、圖書館、多用途室、老人中心、幼稚園、藥房、診所、店舖、餐廳、公共場所等。

GymTile is perfect for a variety of applications such as weight rooms, aerobic areas, health clubs/gym centers, locker rooms, libraries, multi-purpose rooms, elderly center, kindergarten, pharmacies, clinic, office, retail shop, restaurant and all public areas.



認證及檢測報告 Certifications and Test Report of GymTile

GymTile採用先進技術生產，符合多個業內國際標準及要求。

With its state of the art production technology, GymTile has been recognized and in compliance with various industry standard and regulatory organizations.

產品認證 Product Certifications

殘餘凹陷 Residual Depression	EN 433:1994; 壓力 Pressure: 5MPa 檢測結果Result: <0.16mm	符合歐盟標準 Compliance with EN standard 高密度 High density 承重力高 High weight loading capability
耐燃性 Flame Resistance	BS4790: 1987	符合英國標準(一級) Compliance with BS standard (Class 1) 不會助燃 Resistance to flame
煙蒂測試 Stubbed and Burning cigarette	EN1399: 1988	符合歐盟標準 Compliance with EN standard 防止煙蒂產生的火焰 Resistance to stubbed and burning cigarette
毒性檢查 Corrosion Resistance	EN71:Part3:1994	符合歐盟標準 Compliance with EN standard 由乾淨、無毒的循環再用物料而製 Made with non-toxic recycled materials
防滑測試 Slip Resistance	DIN 51130	

GymTile Rubber Flooring Solution

GymTile 橡膠地墊方案提供全面、價格具競爭力的顧問服務，主要分為以下3大類:

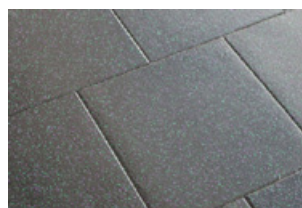
GymTile Rubber Flooring Solution offers comprehensive and competitive consultancy service no matter what the industry you are in. The solution is classified in 3 kinds:

1 方形組裝系統 Square-cut System:

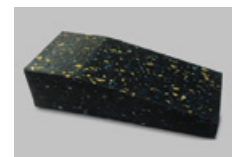
無需使用膠水，每一塊地墊之間緊貼裝嵌便可，無縫組裝。Seamless Tile Pattern – Adhesives is not required. Tiles are assembled together to form a seamless resilient surface.

產品規格 Product Specifications

地墊尺寸 Tile Size (L x W x H)	主地墊 Main Tile 500 x 500 x 12-50mm	斜邊部份 Edge-cut 165 x 500 x 20-50mm
厚度 Thickness(mm)	12 / 15 / 20 / 25 / 30 / 35 / 40 / 45 / 50	20 / 25 / 30 / 50
重量 Tile Weight	0.85kg/sq.m/mm	
物料 Materials	黑色(橡膠), 顏色(EPDM) Black (Rubber) Color (EPDM)	



斜邊 Edge-cut



2 拼砌組裝系統 Interlocking System

無需使用膠水，每一塊地墊之間以互扣形式裝嵌便可。組裝前地板需要鋪設底層。Adhesives is not required. Tiles are interlocked together to form a seamless resilient surface. An underlayer is required before installation.

產品規格 Product Specifications

地墊尺寸 Tile Size (L x W x H)	主地墊 Main Tile 600 x 600 x 8-12mm	斜邊部份 Edge-cut 5m x 25mm x 8-12mm
厚度 Thickness(mm)	12 / 15 / 20 / 25 / 30 / 35 / 40 / 45 / 50	20 / 25 / 30 / 50
重量 Tile Weight	1.22kg/sq.m/mm	
物料 Materials	黑色(橡膠), 顏色(EPDM) Black (Rubber) Color (EPDM)	



斜邊 Edge-cut



3 橡膠卷材系統 Roll System

地墊鋪蓋時需使用膠水黏貼。Adhesives is required to cover the surface with rubber roll.

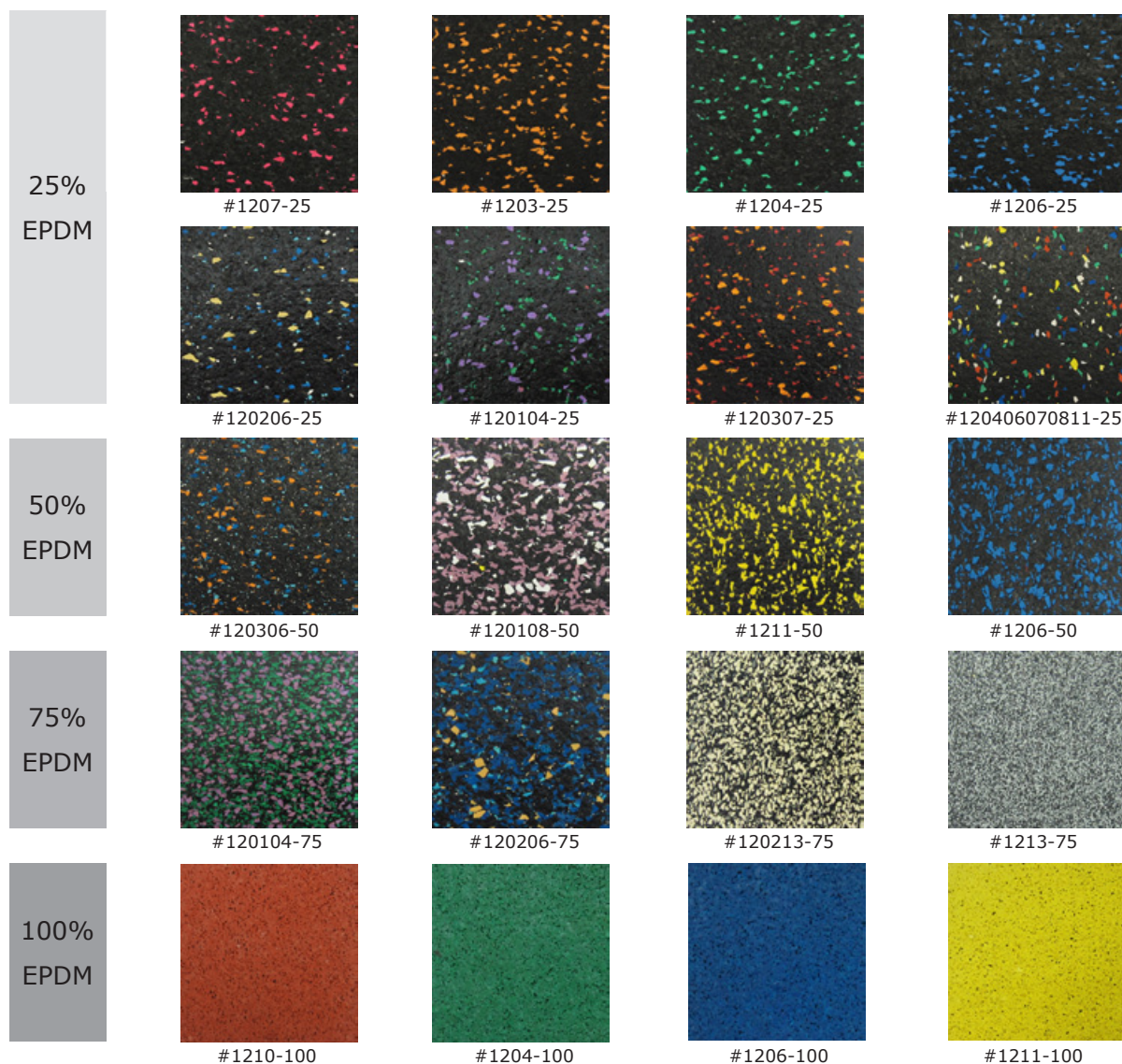
產品規格 Product Specifications

卷材尺寸 Roll Size (L x W x H)	1m x 10m x 5-8mm 1.2m x 10m x 5-8mm
厚度 Thickness(mm)	5 / 6 / 7 / 8
重量 Weight	1.22kg/sq.m/mm
物料 Materials	黑色(橡膠), 顏色(EPDM) Black (Rubber) Color (EPDM)

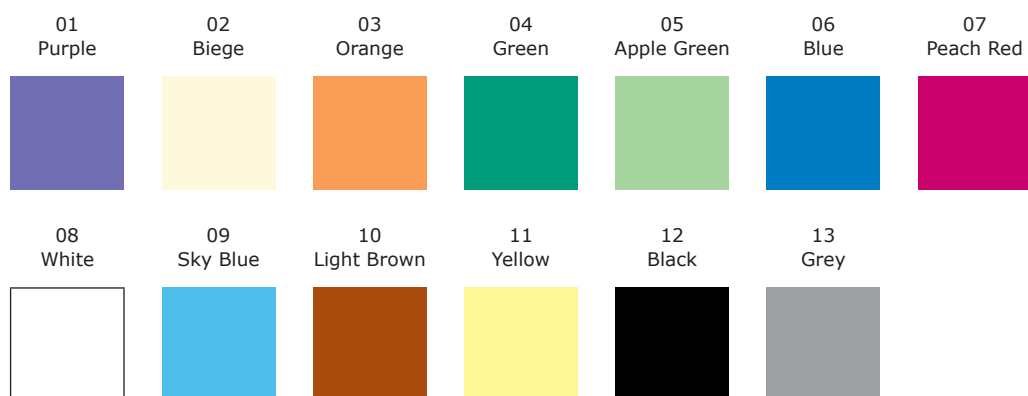


標準顏色配搭 Standard Color Combination

GymTile 有4種預設的顏色配搭可供選擇。客戶亦可自行配搭各種顏色，配合公司或機構的形象。
GymTile has 4 preset series of color combination for your quick selection. Customization of color and pattern could be done from a list of EPDM color options to match with the image of company or organizations.

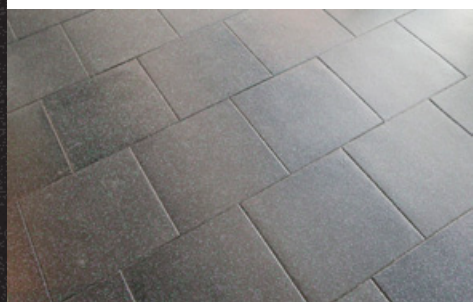


Color option of EPDM

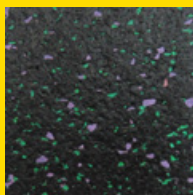


以上印刷顏色或稍有偏差，請以實物為準。 The colors are subject to the actual products.

參考個案 Project Reference

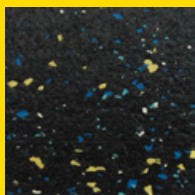


顏色及圖樣 Color & Pattern



25% EPDM
方形組裝系統 Square-cut System

顏色及圖樣 Color & Pattern



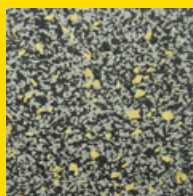
25% EPDM
方形組裝系統 Square-cut System



參考個案 Project Reference

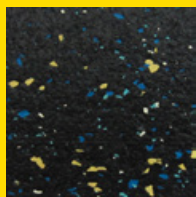


顏色及圖樣 Color & Pattern



75% EPDM
拼砌組裝系統 Interlocking System

顏色及圖樣 Color & Pattern



50% EPDM
拼砌組裝系統
Interlocking System

